

TECHNICAL SPECIFICATION

COLOURS

BODY, FRONT, COUNTER TOP



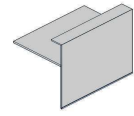
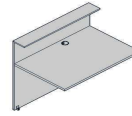
31 CANADIAN OAK



67 WHITE PASTEL



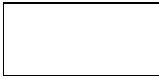
106 LOWLAND NUT



HPL ELEMENTS STRUCTURE



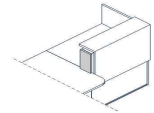
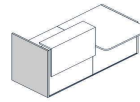
31 CANADIAN OAK



67 WHITE PASTEL



106 LOWLAND NUT



OPTIONAL TOP ELEMENT WITH LIGHT, CORNER UNIT



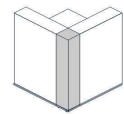
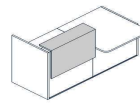
73 HIGH GLOSS
WHITE



101 HIGH GLOSS
BLACK



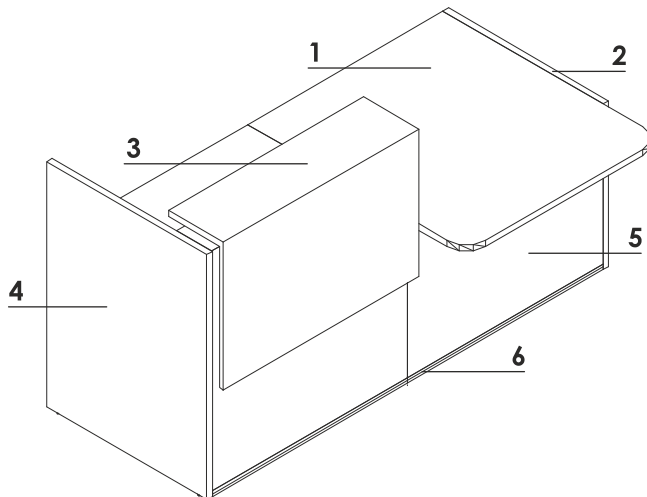
155 ANTHRACITE
HIGH GLOSS



SUPPORTING LEG WHERE WORKTOPS CONNECT NL41

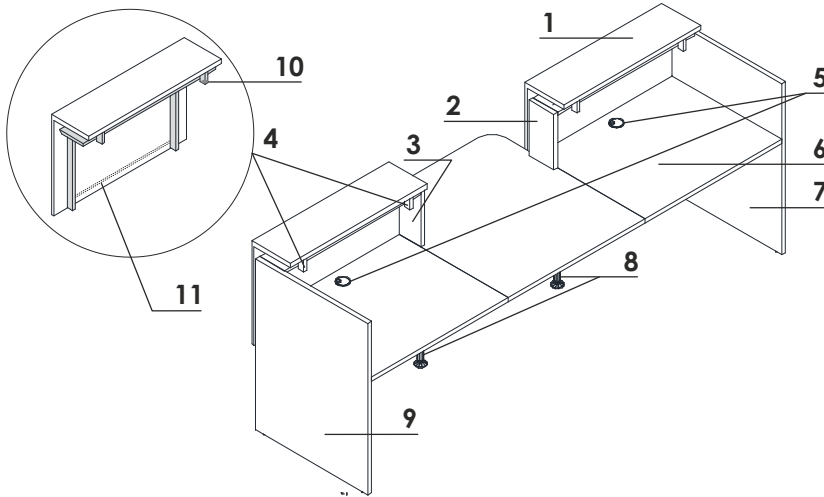


15 HIGH GLOSS
WHITE

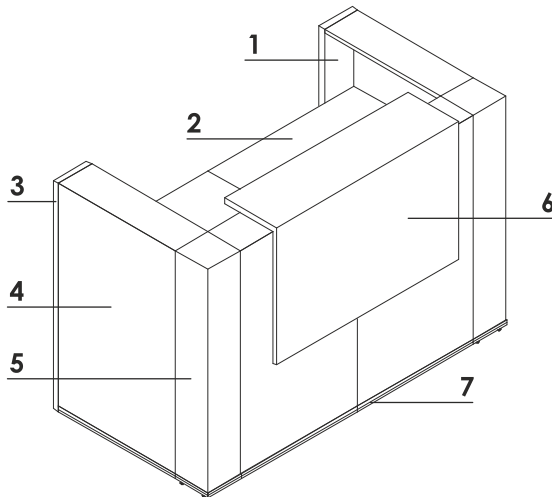


1. **Work top** - MFC 28mm, PVC edge
2. **Low side panel** - MFC 28mm, PVC edge
3. **Optional top element with lightening** - top melamine board 28mm, front melamine board 18mm, all in HPL - gloss
4. **High side panel** - MFC 28mm, PVC edge
5. **Front** - MFC 18mm, PVC edge
6. **Decorative stripe** - PVC, colour 09-aluminum

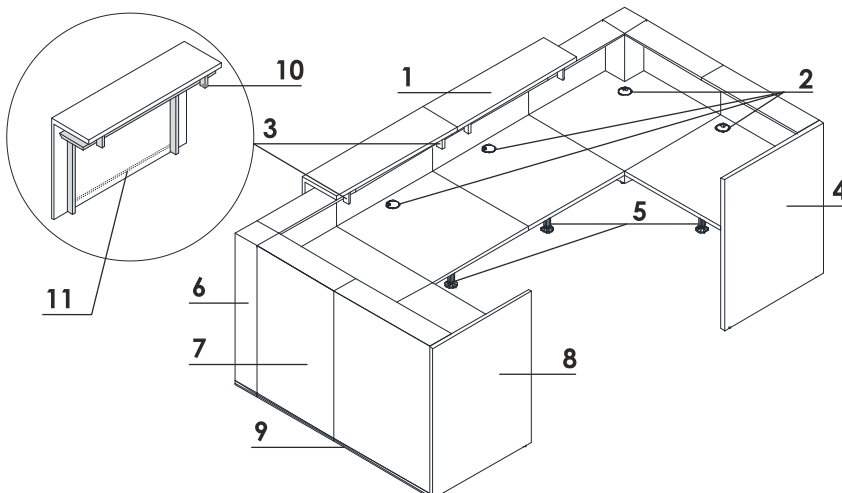
TECHNICAL SPECIFICATION



1. **Optional top element with lightening** - top melamine board 28mm, front melamine board 18mm, all in HPL - gloss
2. **Side panel linking low and heigh fronts** - MFC 28mm, PVC edge
3. **Side panel linking low and heigh fronts** - MFC 28mm, PVC edge
4. **Frame to optional top element with lightening** - metal powder-coated, colour: white, black, anthracite
5. **Cable grommets** - Ø80
6. **Work top** - MFC 28mm, PVC edge
7. **High side panel** - MFC 28mm, PVC edge
8. **Supporting leg NE41**- required for connecting the tops
9. **High side panel** - MFC 28mm, PVC edge
10. Light swich
11. **LED lightening** - WHITE

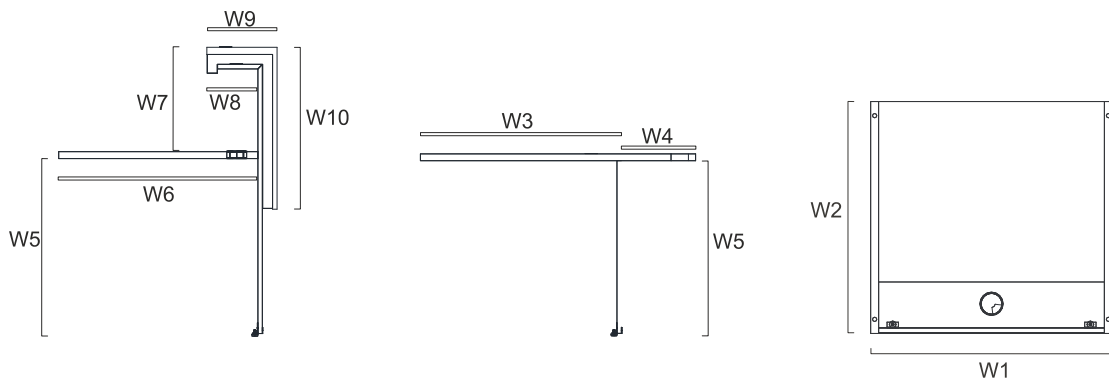
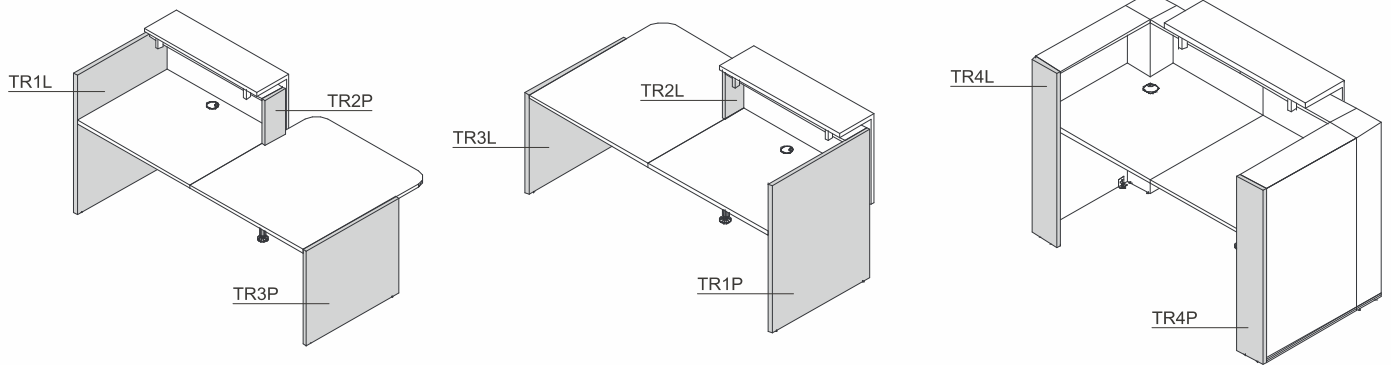


1. **High side panel** - MFC 28mm, PVC edge
2. **Work top** - MFC 28mm, PVC edge
3. **High side panel** - MFC 28mm, PVC edge
4. **Front** - MFC 18mm, PVC edge
5. **Corner unit** - melamine board covered with HPL - gloss
6. **Optional top element with lightening** - top melamine board 28mm, front melamine board 18mm, all in HPL - gloss
7. **Decorative stripe** - PVC, colour 09-aluminum



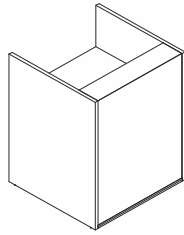
1. **Optional top element with lightening** - top melamine board 28mm, front melamine board 18mm, all in HPL - gloss
2. **Cable grommets** - Ø80
3. **Frame to optional top element with lightening** - metal powder-coated, colour: white, black, anthracite
4. **High side panel** - MFC 28mm, PVC edge
5. **Supporting leg NE41**- required for connecting the tops
6. **Corner unit** - melamine board covered with HPL - gloss
7. **Front** - MFC 18mm, PVC edge
8. **High side panel** - MFC 28mm, PVC edge
9. **Decorative stripe** - PVC, colour 09-aluminum
10. Light swich
11. **LED lightening** - WHITE

TECHNICAL SPECIFICATION

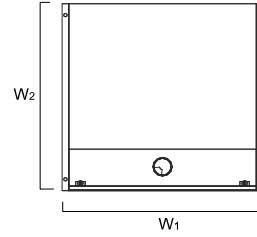


W1 - 856mm | W2 - 820mm | W3 - 818mm | W4 - 302mm | W5 - 740mm | W6 - 800mm | W7 - 419mm | W8 - 205mm | W9 - 282mm | W10 - 650mm

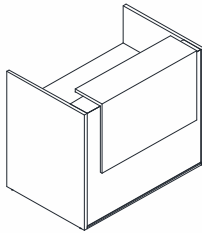
RECEPTION DESKS SYSTEMS



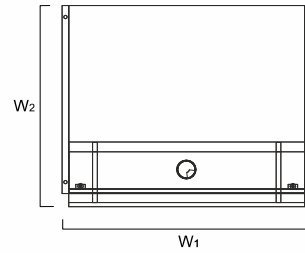
TR1L+TR08+TR1P



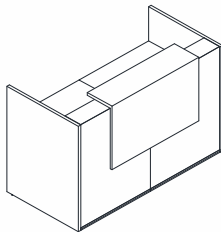
INDEX SYMBOL	DIMENSIONS [mm]						⚖️ kg	📦 m3	📦 pcs	COMMENTS
	W ₁	W ₂	D ₁	D ₂	H					
TRA13	856	820	-	-	1090		59.0	0.124	3	



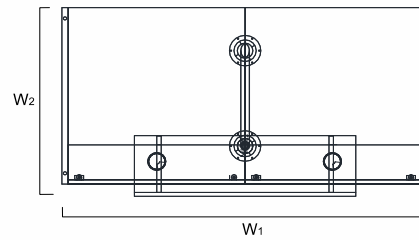
TR1L+TR¹⁰₁₄+TR99+TR1P



INDEX SYMBOL	DIMENSIONS [mm]						⚖️ kg	📦 m3	📦 pcs	COMMENTS
	W ₁	W ₂	D ₁	D ₂	H					
TRA14	1056	877	-	-	1159		66.0	0.136	4	
TRA15	1256	877	-	-	1159		70.0	0.148	4	
TRA16	1456	877	-	-	1159		72.0	0.160	4	



TR1L+2xTR⁰⁸₁₄+TR99+NL41+TR1P



INDEX SYMBOL	DIMENSIONS [mm]						⚖️ kg	📦 m3	📦 pcs	COMMENTS
	W ₁	W ₂	D ₁	D ₂	H					
TRA17	1656	877	-	-	1159		86.0	0.242	6	
TRA18	2056	877	-	-	1159		100.0	0.266	6	
TRA19	2456	877	-	-	1159		108.0	0.290	6	
TRA20	2856	877	-	-	1159		112.0	0.314	6	

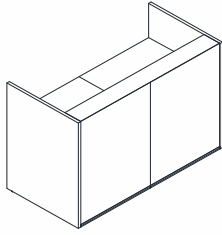
DESCRIPTION

⚖️ - NET WEIGHT

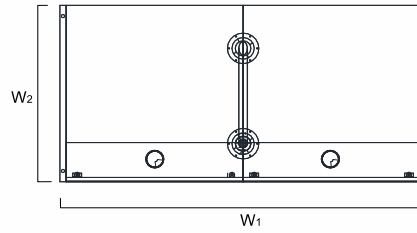
📦 VOLUME

📦 NUMBER OF PACKAGES

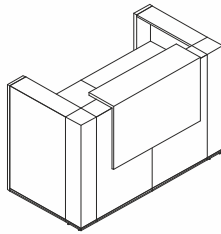
RECEPTION DESKS SYSTEMS



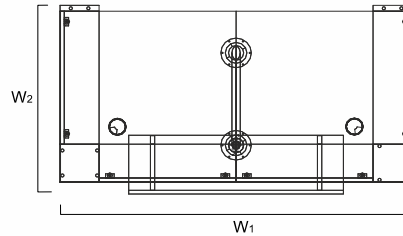
08
10
12
TR1L+2xTR14+NL41+TR1P



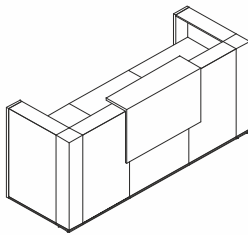
INDEX SYMBOL	DIMENSIONS [mm]						⚖️ kg	📦 m3	📦 pcs	COMMENTS
	W ₁	W ₂	D ₁	D ₂	H					
TRA117	1656	820			1159		86.0	0.242	5	
TRA118	2056	820			1159		100.0	0.266	5	
TRA119	2456	820			1159		108.0	0.290	5	
TRA120	2856	820			1159		112.0	0.314	5	



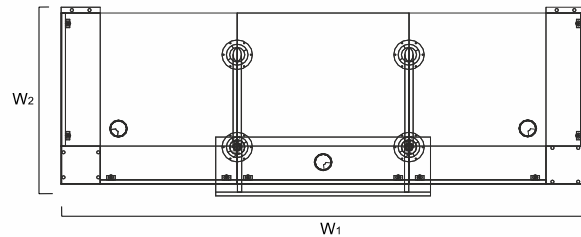
TR4L+2xTR90+NL41+TR99+TR4P



INDEX SYMBOL	DIMENSIONS [mm]						⚖️ kg	📦 m3	📦 pcs	COMMENTS
	W ₁	W ₂	D ₁	D ₂	H					
TRA42	1640	905			1159		82.0	0.277	8	



08
10
12
TR4L+2xTR90+TR14+2xNL41+TR99+TR4P



INDEX SYMBOL	DIMENSIONS [mm]						⚖️ kg	📦 m3	📦 pcs	COMMENTS
	W ₁	W ₂	D ₁	D ₂	H					
TRA21	2440	905			1159		109.0	0.394	10	
TRA22	2640	905			1159		116.0	0.406	10	
TRA23	2840	905			1159		120.0	0.418	10	
TRA24	3040	905			1159		122.0	0.430	10	

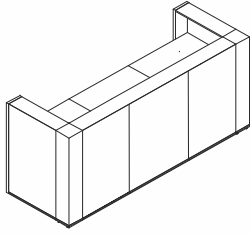
DESCRIPTION

⚖️ - NET WEIGHT

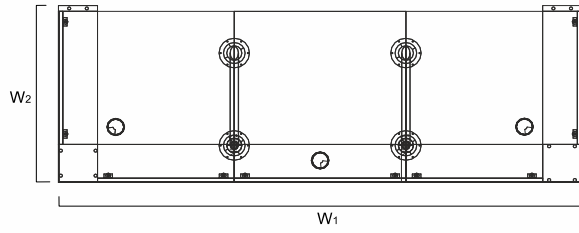
📦 VOLUME

📦 NUMBER OF PACKAGES

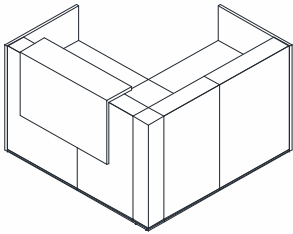
RECEPTION DESKS SYSTEMS



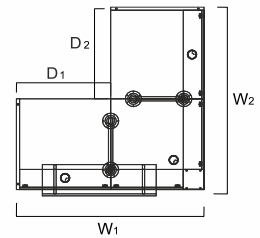
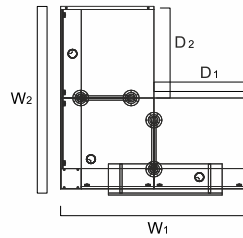
08
10
12
TR4L+2xTR90+TR14+2xNL41+TR4P



INDEX SYMBOL	DIMENSIONS [mm]									COMMENTS
	W ₁	W ₂	D ₁	D ₂	H		kg	m ³	pcs	
TRA121	2440	848			1159		109.0	0.394	9	
TRA122	2640	848			1159		116.0	0.406	9	
TRA123	2840	848			1159		120.0	0.418	9	
TRA124	3040	848			1159		122.0	0.430	9	



08
10
12
TR1L+TR14+2xNL41+TR90+TR99+TR08+TR1P



INDEX SYMBOL	DIMENSIONS [mm]									COMMENTS
	W ₁	W ₂	D ₁	D ₂	H		kg	m ³	pcs	
TRA25	1648	1705			1159		124.0	0.403	9	
TRA26	1848	1705			1159		131.0	0.415	9	
TRA27	2048	1705			1159		135.0	0.427	9	
TRA28	2248	1705			1159		137.0	0.439	9	

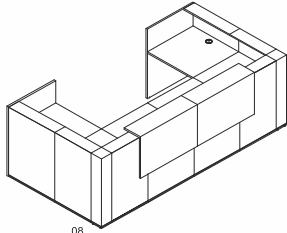
DESCRIPTION

- NET WEIGHT

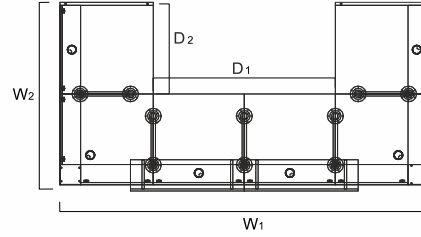
VOLUME

NUMBER OF PACKAGES

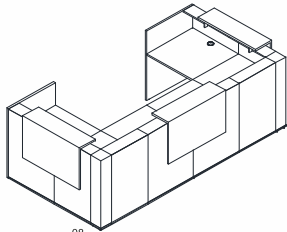
RECEPTION DESKS SYSTEMS



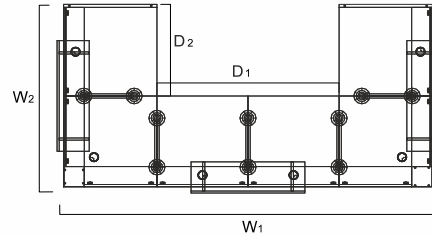
TR1L+2xTR08+2xTR90+2xTR14+5xNL41+2xTR99+TR1P



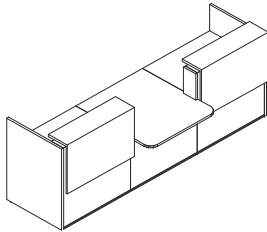
INDEX SYMBOL	DIMENSIONS [mm]						⚖️ kg	📦 m3	📦 pcs	COMMENTS
	W ₁	W ₂	D ₁	D ₂	H					
TRA29	3240	1705	-	-	1159		216.0	0.799	17	
TRA30	3640	1705	-	-	1159		230.0	0.824	17	
TRA31	4040	1705	-	-	1159		238.0	0.848	17	
TRA32	4440	1705	-	-	1159		242.0	0.872	17	



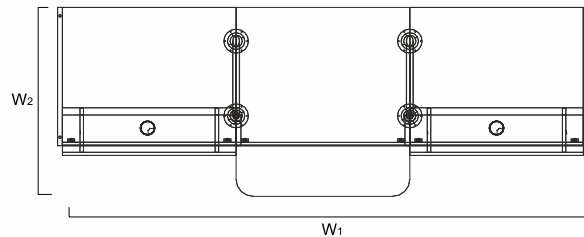
TR1L+2xTR08+2xTR90+2xTR14+5xNL41+3xTR99+TR1P



INDEX SYMBOL	DIMENSIONS [mm]						⚖️ kg	📦 m3	📦 pcs	COMMENTS
	W ₁	W ₂	D ₁	D ₂	H					
TRA129	3354	1705	-	-	1159		216.0	0.799	18	
TRA130	3754	1705	-	-	1159		230.0	0.824	18	
TRA131	4154	1705	-	-	1159		238.0	0.848	18	
TRA132	4554	1705	-	-	1159		242.0	0.872	18	



TR1L+2xTR14+TR2P+TR11+TR2L+2xNL41+2xTR99+TR1P



INDEX SYMBOL	DIMENSIONS [mm]						⚖️ kg	📦 m3	📦 pcs	COMMENTS
	W ₁	W ₂	D ₁	D ₂	H					
TRA33	3056	1120	-	-	1159		135.0	0.426	11	
TRA34	3456	1120	-	-	1159		143.0	0.451	11	
TRA35	3856	1120	-	-	1159		147.0	0.475	11	

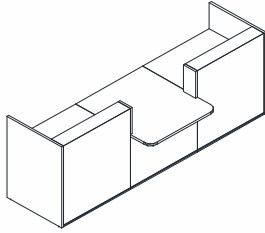
DESCRIPTION

⚖️ - NET WEIGHT

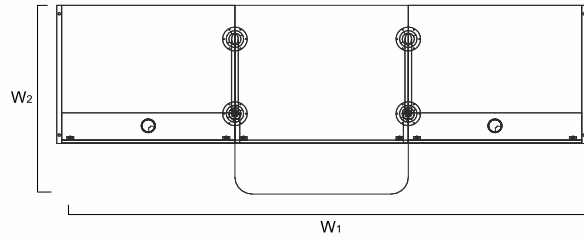
📦 VOLUME

📦 NUMBER OF PACKAGES

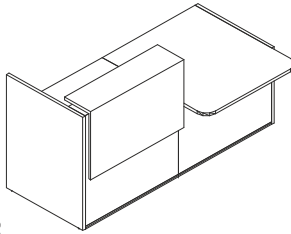
RECEPTION DESKS SYSTEMS



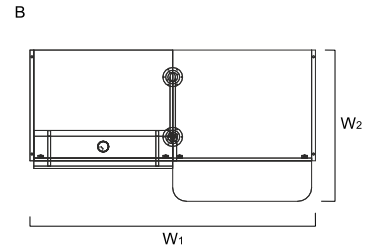
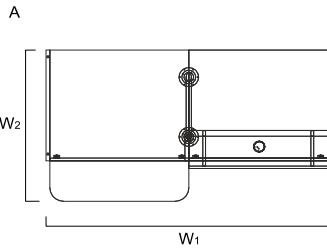
TR1L+2xTR¹⁰₁₄+TR2P+TR11+TR2L+2xNL41+TR1P



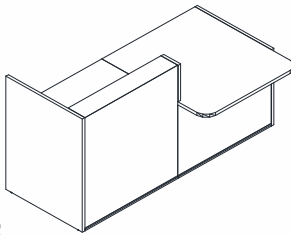
INDEX SYMBOL	DIMENSIONS [mm]						⚖️ kg	📦 m3	📦 pcs	COMMENTS
	W ₁	W ₂	D ₁	D ₂	H					
TRA133	3056	1120	-	-	1159		135.0	0.426	9	
TRA134	3456	1120	-	-	1159		143.0	0.451	9	
TRA135	3856	1120	-	-	1159		147.0	0.475	9	



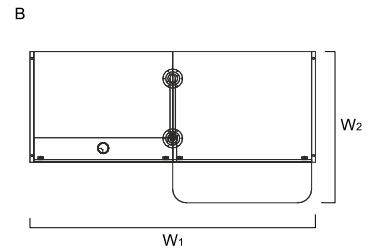
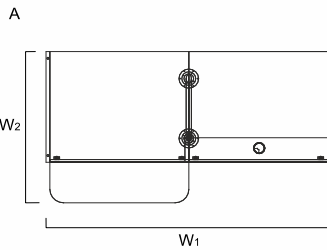
A: TR1L+TR¹⁰₁₄+TR2P+TR99+TR11+NL41+TR3P
 B: TR3L+TR11+TR2L+TR99+TR¹⁰₁₄+NL41+TR1P



INDEX SYMBOL		DIMENSIONS [mm]						⚖️ kg	📦 m3	📦 pcs	COMMENTS
A	B	W ₁	W ₂	D ₁	D ₂	H					
TRA36L	TRA36P	2056	1120	-	-	1159		94.5	0.283	7	
TRA37L	TRA37P	2256	1120	-	-	1159		98.5	0.295	7	
TRA38L	TRA38P	2456	1120	-	-	1159		100.5	0.308	7	



A: TR1L+TR¹⁰₁₄+TR2P+TR11+NL41+TR3P
 B: TR3L+TR11+TR2L+TR¹⁰₁₄+NL41+TR1P



INDEX SYMBOL		DIMENSIONS [mm]						⚖️ kg	📦 m3	📦 pcs	COMMENTS
A	B	W ₁	W ₂	D ₁	D ₂	H					
TRA136L	TRA136P	2056	1120	-	-	1159		94.5	0.283	6	
TRA137L	TRA137P	2256	1120	-	-	1159		98.5	0.295	6	
TRA138L	TRA138P	2456	1120	-	-	1159		100.5	0.308	6	

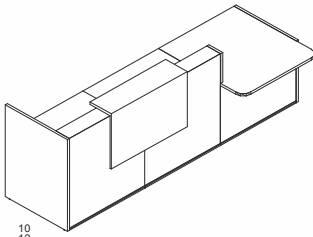
DESCRIPTION

⚖️ - NET WEIGHT

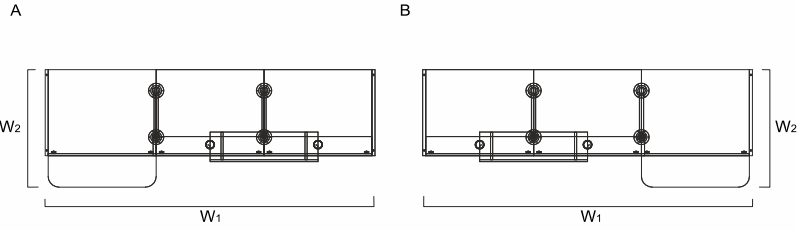
📦 VOLUME

📦 NUMBER OF PACKAGES

RECEPTION DESKS SYSTEMS



A: TR1L+2xTR¹⁰_{i4}+TR2P+TR99+TR11+2xNL41+TR3P
 B: TR3L+TR11+TR2L+2xTR¹⁰_{i4}+TR99+2xNL41+TR1P











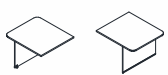

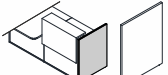
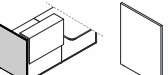
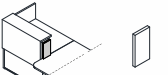
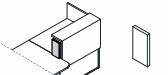
INDEX SYMBOL		DIMENSIONS [mm]						⚖️	📦	📦		COMMENTS
A	B	W ₁	W ₂	D ₁	D ₂	H						
TRA39L	TRA39P	3056	1120	-	-	1159		128.5	0.413	9		
TRA40L	TRA40P	3456	1120	-	-	1159		136.5	0.437	9		
TRA41L	TRA41P	3856	1120	-	-	1159		140.5	0.461	9		

DESCRIPTION


⚖️ - NET WEIGHT




📦 VOLUME

📦 NUMBER OF PACKAGES

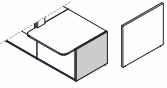
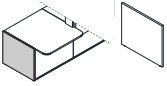
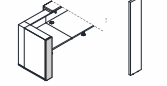
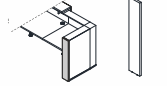
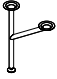
PRODUCT ILLUSTRATION	DIMENSIONS [mm]			INDEX SYMBOL						COMMENTS
	WIDTH	DEPTH	HEIGHT			kg	m3	pcs		
COMPOSITION ELEMENTS										
	800	818	1090	TR08		25.0	0.054	1		
	1000	818	1090	TR10		32.0	0.067	1		
	1200	818	1090	TR12		36.0	0.079	1		
	1400	818	1090	TR14		38.0	0.091	1		
	818	818	1090	TR90		36.0	0.098	2		
	1000	1120	740	TR11		30.0	0.092	1		
	1000	282	650	TR99		0.0	0.001	1		decorative lighted element
	28	820	1090	TR1L		17.0	0.035	1		side panel for high units -left
	28	820	1090	TR1P		17.0	0.035	1		side panel for high units - right
	28	182	350	TR2L		1.5	0.003	1		left upper side panel for combining low and high element
	28	182	350	TR2P		1.5	0.003	1		right upper side panel for combining low and high element

DESCRIPTION


 - NET WEIGHT VOLUME NUMBER OF PACKAGES

PRODUCT ILLUSTRATION	DIMENSIONS [mm]			INDEX SYMBOL						COMMENTS
	WIDTH	DEPTH	HEIGHT			kg	m3	pcs		


COMPOSITION ELEMENTS

	28	820	740	TR3L		12.0	0.025	1		left side panel for low unit
	28	820	740	TR3P		12.0	0.025	1		right side panel for low unit
	28	182	1090	TR4L		4.0	0.008	1		side panel for high units -left
	28	182	1090	TR4P		4.0	0.008	1		side panel for high units - right
	585	142	712	NL41		2.0	0.063	1		round profile leg

DESCRIPTION

 - NET WEIGHT

 VOLUME

 NUMBER OF PACKAGES