

SPECIFICATION

Range: **SNOWGEMS**

Design: **Annalisa Dominoni, Benedetto Quaquaro**

“Snowsound Technology” sound-absorbing wall element.

Panel description:

Both faces with convex section 36 mm thick, consisting of an internal padding in variable density polyester fiber. The density decreases moving towards the heart of the panel, which is covered on both sides with Trevira CS® polyester fabric, solidly applied to the padding. The panel is double sided, with same characteristics on both sides. It is characterized by the rigid edge obtained by the manufacturing process itself, without any supporting and/or stiffening frame.

The panels are equipped with a through-hole for the insertion of the tubular frame and are each completed with chrome-plated zamak shaped ferrules. The 50x50 cm and 36x57.5 cm panels can rotate on their own axis.

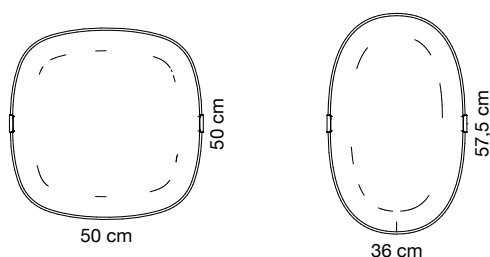
The panel has an **Italian Class1** fire reaction and **Euroclass B-s2, d0**.

The panel is **Greenguard Gold** certified, which validates its low VOC emission and its contribution to the quality of the indoor environment.

The panel is **100% recyclable** and has no detectable formaldehyde content according to UNI EN 717-2. It does not contain felts or other organic materials that are hardly recyclable.

The panel has been tested in reverberation chamber according to UNI EN ISO 354 and obtained “**Acoustic Absorption Class A**”, in accordance with UNI EN ISO 11654.

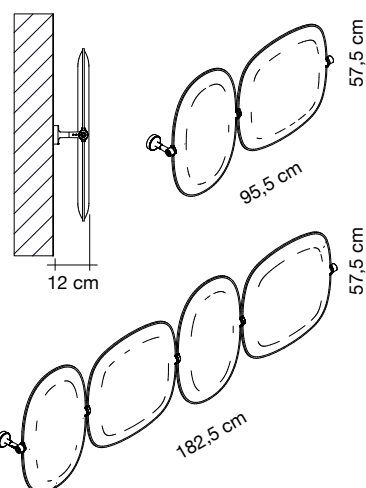
Panels dimensions:



Structure description:

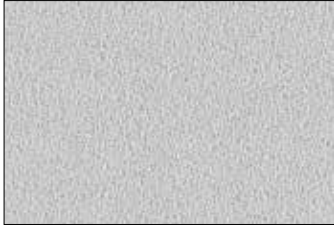
Structure consisting of a \varnothing 20 mm galvanised steel tube fitted with threaded sleeves at the ends to which two wall-mounting brackets are attached by means of an M8x30 screw.

The supports each consist of: a chrome-plated zamak ring nut with holes for wall mounting; a chrome-plated zamak closing/connecting element with threaded end; a nickel-plated steel conical pin and a chrome-plated zamak connecting element. This element allows, by means of the conical pin, the wall support to be joined to the panel support tube. The whole is made integral by the insertion of M4x6 grub screws.



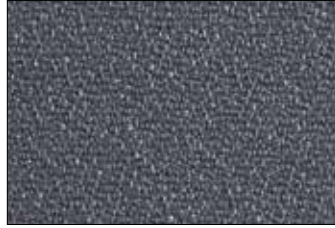
Available colors:

8002



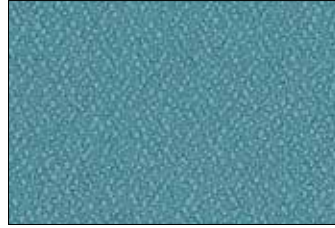
Cool white

8007



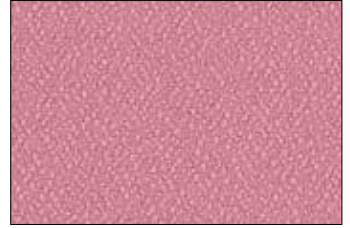
Dark grey

4067



Aquamarine

7074



Rose quartz



Caimi Brevetti S.p.A. reserves, by its unappealable judgment, the right to modify without prior notice the building materials, the technical and aesthetic specifications, as well as the dimensions of the products in this technical sheet, where pictures are purely as an indication.